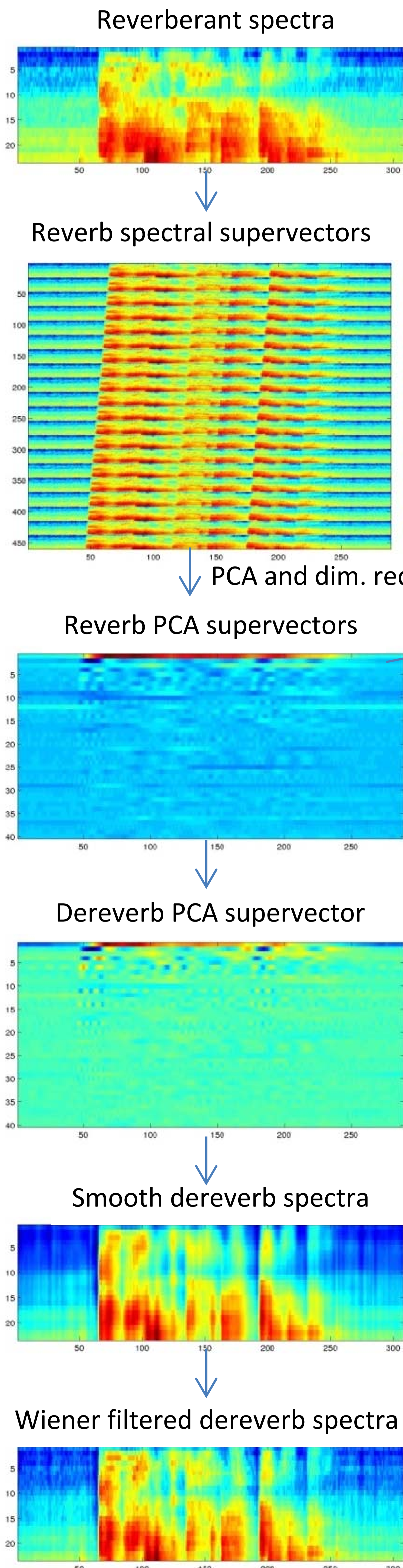


# Reverberation robust speech recognition by matching spectrally and temporally decorrelated features

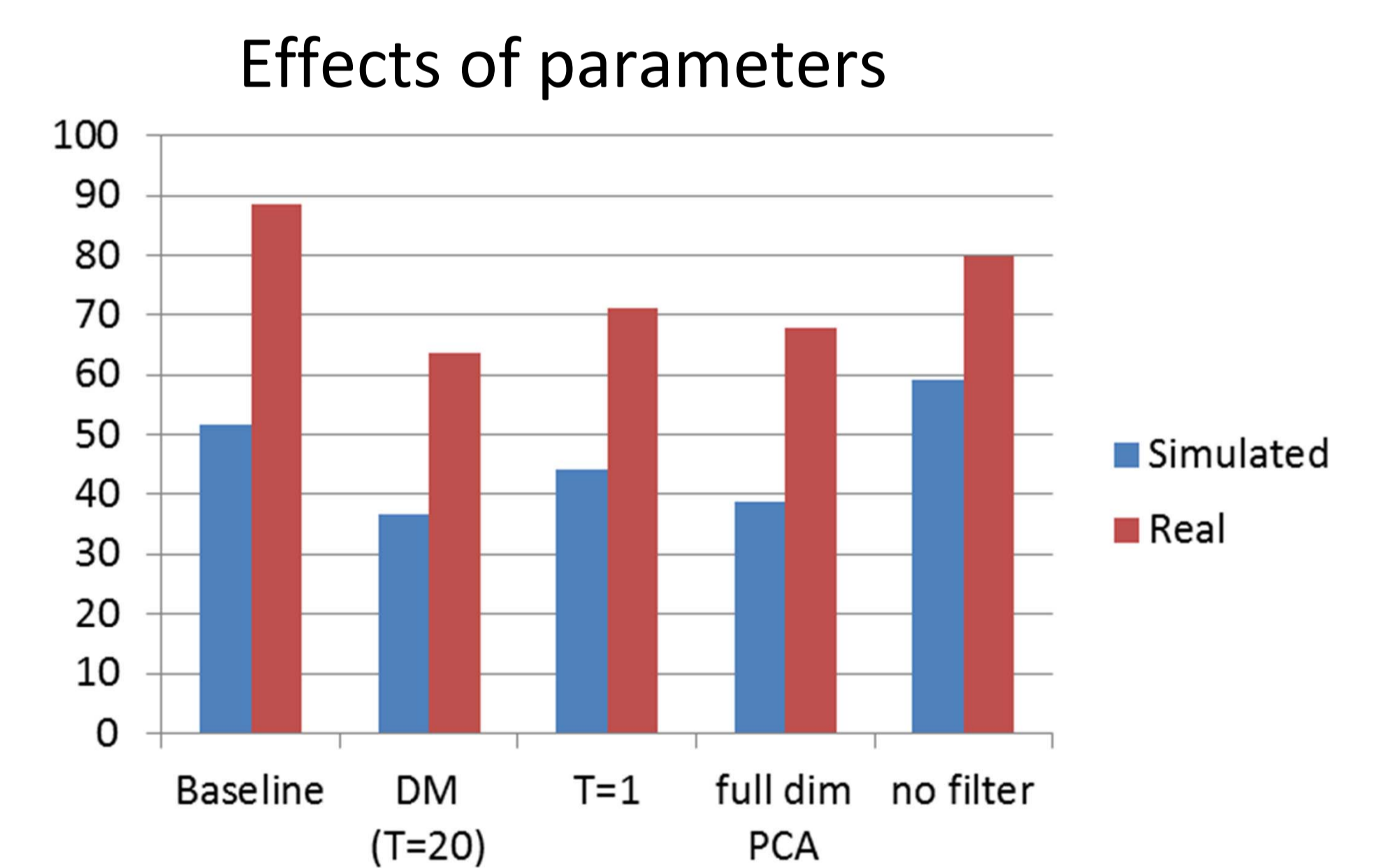
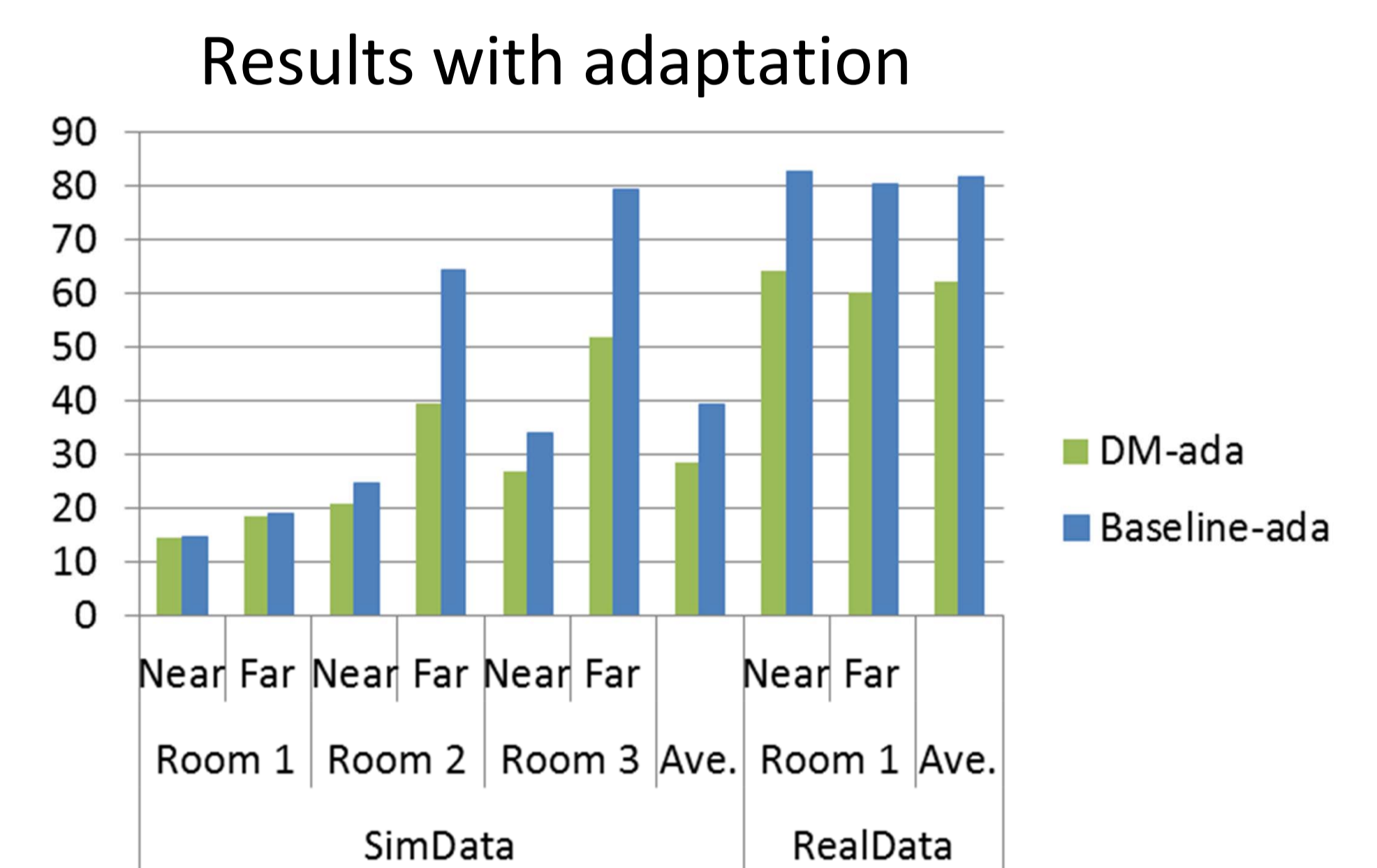
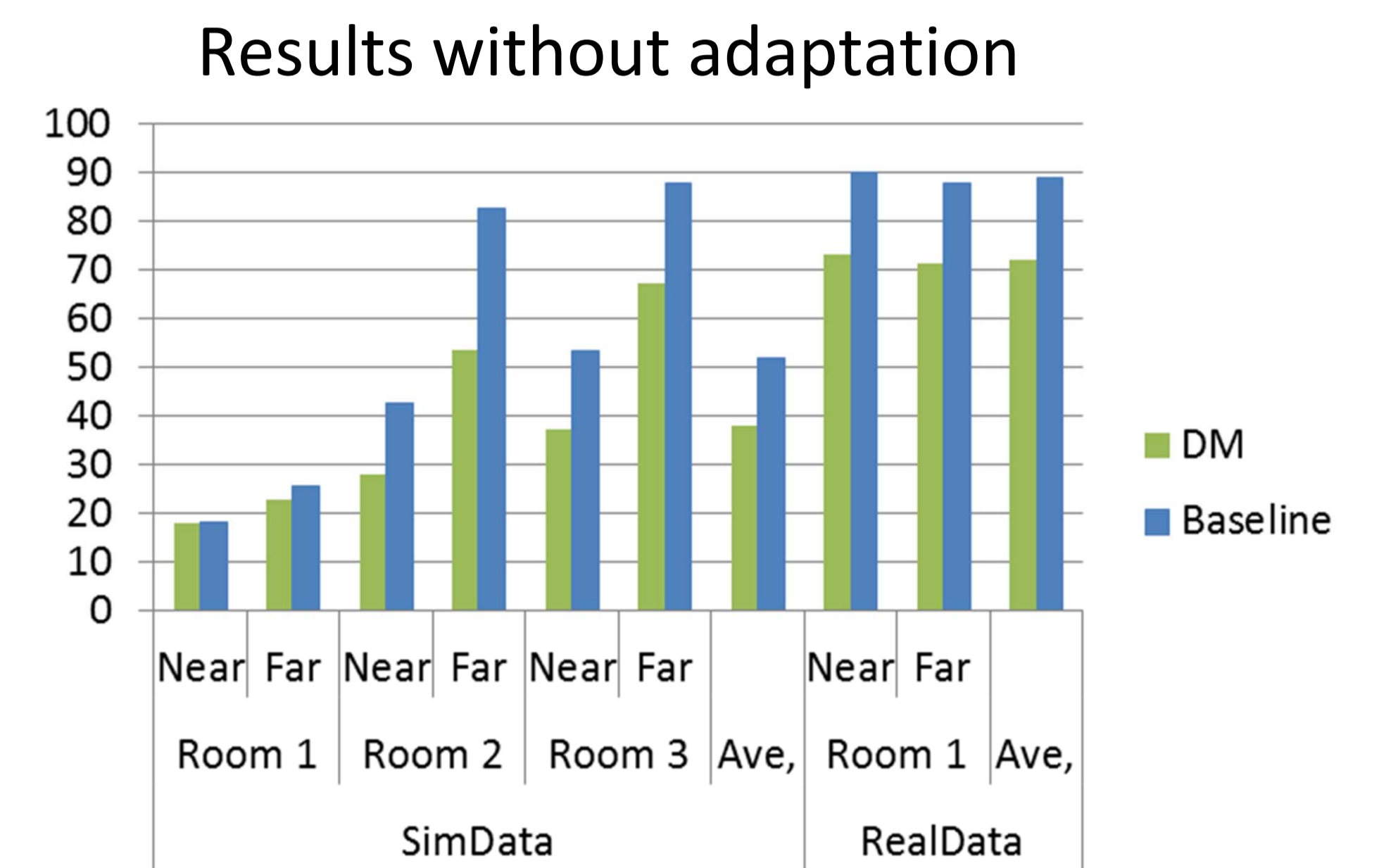
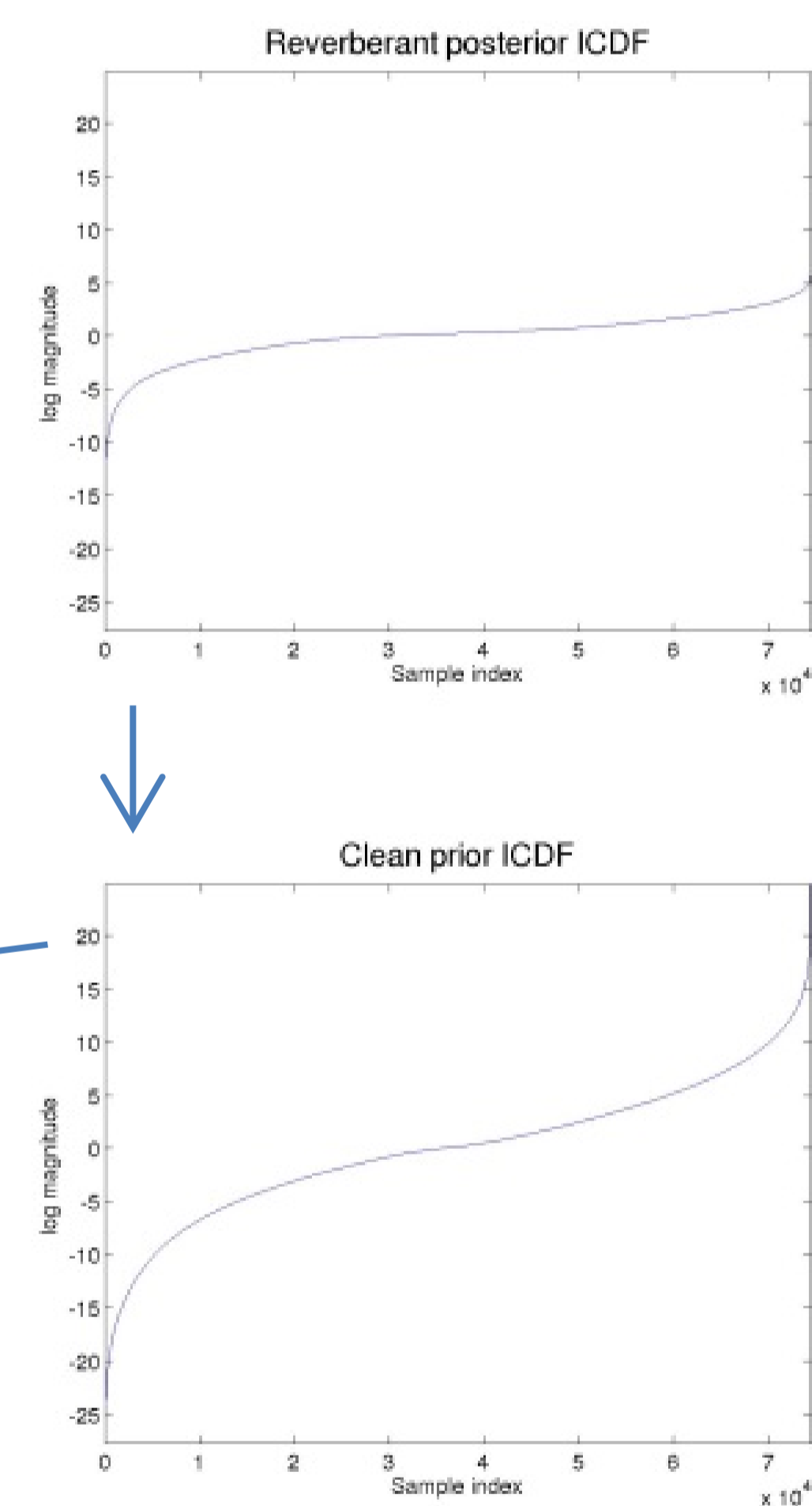
Kalle Palomäki and Heikki Kallasjoki  
 Dept. of Signal Processing and Acoustics  
 Aalto University, Finland



- All results with:
- Full batch processing
  - Clean training
  - Single channel

Code available:  
<http://users.spa.aalto.fi/kpalomak/>

## Channel by channel Distribution Mapping



## References

- S. Dharanipragada and M. Padmanabhan, "A non-linear unsupervised adaptation technique for speech recognition," in Proc. ICSLP 2000 Beijing.
- G. Saon, S. Dharanipragada, and D. Povey, "Feature space gaussianization," in Proc. ICASSP-2004.

## Acknowledgement

- This work was supported by:
- TEKES FuNeSoMo, KAUTE and Emil Aaltonen foundations (KJP)
  - Academy of Finland
    - Academy research fellowship (KJP)
    - Center of Excellence in Computational Inference
  - Hecse graduate school (HK)
  - Aalto University "Science-IT" project.